

**JUST
HISTORIC CARS**
...reviving motoring history



*Specialists in restoration, maintenance and
support of Classic and Sports cars*

*Let us make ownership
of your classic a joy!*

Whatever your dream car is..... Just enjoy driving it!

UNIT 6, CASTLEHAM ROAD, ST LEONARDS ON SEA, EAST SUSSEX, TN38 9NR
TEL: 01424 234555 WWW.JUSTHISTORICCARS.CO.UK
EMAIL: MELVIN@JUSTHISTORICCARS.CO.UK



Classic and Custom Car Show 2005 – 2025



At The Polegrove, Brockley Road, Bexhill TN39 3EX

MAIN SPONSOR—TRENCHLINE UTILITIES

For more information on this event and other club activities:
www.bexhill100mc.co.uk

Bexhill on Sea - the Birthplace of British Motor Racing



THE CAR DEN
CLASSIC CAR STORAGE
NINFIELD AND WADHURST



SPECIAL OFFER
3 MONTHS FOR THE PRICE OF 2
Valid on new bookings at
Ninfield until 1st September

www.thecardenstorage.co.uk
01424 40 80 40



WARNINGS

Maximum speed limit at all times in the showground is:-

5 MILES PER HOUR

PLEASE KEEP TO IT

ANY VEHICLE MOVEMENT between 10am and 4pm **MUST** be accompanied by a marshall.

ALL VEHICLES must remain in the showground until 4pm

In an emergency, please contact the Bexhill 100 Registration Point to request a marshall and then, if needed, wait to be escorted from the showground

Children are to be kept under the control of parents or guardians at all times. Please take care and be on the lookout for vehicle movement at all times

Fire extinguishers can be found by the Bexhill 100 Registration Point

First Aid is provided by Blue Response close to the Bexhill 100 Registration Point and public conveniences

Dogs are to be kept on a lead at all times

Please place any litter in the bins provided

Please **DO NOT** touch the exhibits without asking the owner's consent.
Thank You

Lost and Found is located at the Bexhill 100 Registration Point

PLEASE NOTE: We are in a 30mph rural speed limit, so, when leaving the showground please observe the limit. Thank You

We would like some feedback about this programme and the show as a whole, please put comments on the Bexhill 100 Motoring Club Facebook page.

BEXHILL 100 STAND - NO. 54

Raffle Tickets only £1 each



Terrific Tantalising Tombola

- 3 tickets for £1

Children's Magnificent Mystery Bags

- pay the price, pick a bag, a prize every time
- £1 to £5

CHAIRMANS' WELCOME

Welcome to our 2025 20th anniversary show.

We have aimed to make this show the best yet with more cars, more trade stands and lots more special features which are advertised in this programme.

We have a hard working committee and volunteers from over the past 20 years that we owe the success of the show down to, every one of them.

It is an amazing story of how much the show has managed to generate over the years, increasing the donations to local charities. In 2024 we were able to give away £24,000 to our four chosen charities, to take our total to £180,000. Could we break the £200,000 total this show ??? A special thanks this year to our major sponsors, **Trenchline Utilities** and all those who have made this show possible.

Sadly, this year will be my last year as Bexhill 100 Motoring Club Chairperson and last year as show Co-Ordinator. Having had these positions for a good few years, I feel the club needs new blood to take it to the next level. We have an amazing team who I have had the pleasure to work with, especially Charlie Rowland, who is just one of the unassuming and dedicated people I know. I will still be involved with the club in many ways, so watch this space. I hope you enjoy the show and take a look around, if the show is packed we will break that target.

Chris Speck, Chair of Bexhill 100 Motoring Club.

SHOW ORGANISING COMMITTEE

Show Co-Ordinators:	Chris Speck & Charlie Rowland
Ground Planning:	Roger Butler & Alan Timms
Finance:	Charlie Rowland
Show Entries/Trade Stands:	Frances Rowland
Show Security:	Steve Parker, Chris Speck & Martin Eames
Photography:	Jeff Penfold & Charlie Dwyer
Show Programme:	Heidi Speck
Event Staffing:	Phil Hart
Club Regalia Stand & Raffle:	Sue Hammett
Teas & Coffees for Volunteers:	Sue Dickinson

Printed by EasyFastPrint info@easyfastprint.co.uk www.easyfastprint.co.uk

0333 577 2282

ROBIN READ RACING HISTORY

1967 Attended first meeting with father as spectators.
1973 First competition licence. Motorcycle: 500 cc Triumph in a Lambretta Li 150 frame.
1975 First front engine dragster: 1800 cc Volvo engine.
1979 Final version of Volvo dragster before sale to new owners in Germany – this one was the fastest/quickest naturally aspirated, petrol fueled push rod 4 cylinder.
1981 First rear engine Daimler – supercharged and fuel injected running on methanol fuel.
1986 The car we called the half car, old front end but with a new rear axle transmission and chassis, self-designed and built. This time supercharged, fuel injected and running on nitromethane fuel.
1987 An all new car, self-designed and built, utilising the one-year old rear chassis etc., but with an all new front end. The car won its debut meeting. The previous car chassis reunited and sold.
1988 Contest the European Competition Car Championship. This series had 10 rounds of championship around Europe. We achieved second place.
1989 Contest the Euro Series again. We won the series this year setting a new series record for elapsed time and terminal speed: 7.04 seconds at 184 mph., and winning the final event. We went on to the finals meeting at Santa Pod and ran the World's first 6 with a British engine: 6.97 seconds at 187 mph.
1990 Contest the Euro Series – achieved second place.
1991-1995 Ran the car on a selected meeting basis winning several events per year at home in the U.K. and in Europe. In 1992 we ran another World first: 6.81 seconds at 189 mph.
1996 Contest the British National Super Pro race series and achieve second place.
1997-1998 No racing activity – concentrate on business.
1999 Partnered and drove the Top Fuel car of Knut Söderqvist as part of a two-car team, mine being the second car. We compete in the FIA European Top Fuel Championship and achieve second place after the team number one car was destroyed in a crash at Hockenheim. We win the Finals Meeting at Santa Pod running 5.08 seconds at 299 mph which seeded me in the World's top 50.
1999 The Daimler dragster invited to a Jaguar / Daimler shootout meeting at Santa Pod where the Le Mans Jaguar attended as did all the iconic Jaguars. We beat all comers and ran the fastest time and speed of the day and a class win
2000-2002 Partnered and drove the Top Fuel car at selected meetings for Knut Söderqvist.
2002-2008 No racing activity – I thought I had retired!
2008 Read family inducted into the British Drag Racing Hall of Fame. My father, Jim, raced until his death in 1989. He was a successful racer in the old Pro-Comp category and was also Chairman of the BDRA and HRA for 10 years.
2008-2010 No racing activity.
2011 Invited by the Hall of Fame to static display the Daimler at the Santa Pod Dragstalgia event.
2012 Daimler recommissioned and attended Dragstalgia as a running car - runs 7.08 seconds at 187 mph on only its second pass.
2013-2017 Daimler has been making demonstration runs at various tracks and events. In 2017 we ran two World first times and speeds – 6.69 seconds at 199.89 mph. TO DATE NO OTHER BRITISH ENGINED CAR HAS RUN SUB 7 SECONDS OR OVER 180 MPH.
In 2016 we raced a best of three against the Split Second Jet powered dragster and won. In 2017 we raced a best of three against the Firestorm Jet powered funny car and won.
2016-2017 Construction of a new Daimler Dragster utilising the latest specification and materials.
2017-2020 Developing new engine parts using the original dragster as a test vehicle
2020-23 New dragster debuted, has run a best so far of 6.37 seconds at 209mph, lowering the world records for time and speed seven times since its debut. The chassis and body and engine components of both dragsters are designed, developed and manufactured by Robin Read Racing. As a team we have been together for 40 years. Many thanks to the Triple R Team
Mark Evans, Bertie Hopkinson, Bill Mears, Ella Chapman and Damian Burke

These Dragsters are completely unique in that they are the World record holders for British engine vehicles irrespective of sport discipline or engine capacity.

Your local family run business in Hastings

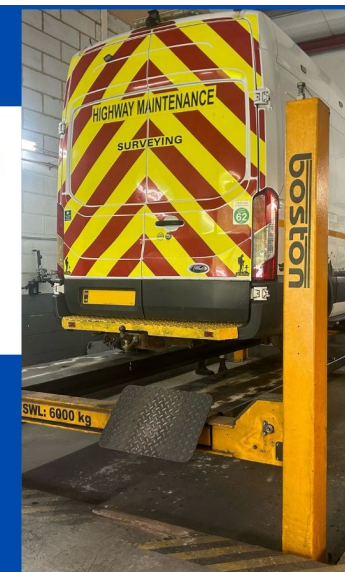
HASTINGS
MOTOR CARE
PROVIDING THE BEST FOR YOUR VEHICLE

Hastings Motor Care believes in providing our customers with outstanding value and exceptional service at all times and only use quality parts from reputable suppliers.

MOT'S CLASS 1,2,4,5,7
SERVICING
TYRES
DIAGNOSTICS
DPF CLEANING SERVICE
CAMBELTS / WETBELTS
AIR CONDITIONING
WHEEL ALIGNMENT
LARGE COMMERCIAL RAMP
BRAKES
CLUTCHES
WELDING
BATTERIES

www.hastingsmotorcare.co.uk

01424 461309

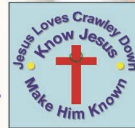


Jesus Loves Bexhill

www.jesuslovesbexhill.org.uk
info@jesuslovesbexhill.org.uk



We are your friendly bunch of litter pickers here at the show every year in the Polegrove looking for any stray litter, and making sure everything is as neat and tidy as we can make it.



We are all in our Jesus Loves Bexhill or Jesus Loves Sidley Hi'Vis so you can't really miss us. Please take a moment to stop one of us and say hello, we would love to have a chat. Or why not look out for our gazebo over in the Trade Stand area.



If you would like a group in your town please get in touch.



PROGRAMME OF EVENTS

10.00 – 16.00	Music and commentary supplied by Bexhill Promotions
10.00 – 16.00	Uncle Bumble – children's entertainment
10.00 – 16.00	Cream Teas at Bexhill Lions area and music by The Other Band throughout the day
11.00	Official opening of the show
11.00	Registration for Bexhill Lions Dog Show
11.30	East Sussex Fire Cadets (Bexhill) demonstration
12.30	Bexhill Lions Dog Show
13.00	Dragster start-up
13.30	East Sussex Fire Cadets (Bexhill) demonstration
14.30	Presentation of Trophies
15.00	Bexhill 100 Raffle Draw
15.30	Duck Hunt Prize Draw
16.00	Colouring Competition Results
17.00	Close of show

ROBIN READ'S DRAGSTER





☎ 01424 213300

📌 BentleySteakhouse

🌐 Bentleysteakhouse.co.uk 📷 BexhillBentleysSteakhouse

12 Western Road, Bexhill, East Sussex, TN40 1DX



☎ 01424 733933

📌 BentleySmokehouse

🌐 BentleySmokehouse.co.uk 📷 BentleySmokehouse

58-60 Devonshire Road, Bexhill, East Sussex, TN40 1AX



PRICES STARTING FROM £25 PER WEEK

24 HOUR ACCESS, 7 DAYS A WEEK

CONTACT US TODAY ON
01424 219086/07967 656060

OR VISIT OUR WEBSITE

www.bexhillstorage.co.uk

TRADE STANDS 2025



MERIDIAN MARQUEES

For over 15 years, Meridian Marquees have been providing the complete service for the ultimate party, wedding reception, simple family gathering or large corporate events.

We pride ourselves on having the knowledge and expertise to create the perfect ambience for your special event. We employ a full time team of marquee erectors. All of our crew are highly trained, locally employed, conscientious and polite.



Call Dave on 01424 839794 – Website www.meridian-marquees.com

The Complete Hospitality Company



Parker Building Supplies

are proud to support
**The Bexhill 100 Motoring Club
Classic & Custom Car Show**



PARKER BUILDING SUPPLIES

Everything for the
Trade & DIY

0844 257 7000
parkerbs.com
 8 Beeching Road Southton Sea
 East Sussex TN39 3LQ
 and branches throughout the South East

- | | |
|-------------------------------------|---------------------------|
| 1. CAR PORTRAITS | 45. POLEGROVE BOWLS CLUB |
| 2. HANDMADE CRAFTS | 46. JUST HISTORICS |
| 3. OLD TOOLS | 47. ICE CREAM |
| 4. ETHNIC ARTS & CRAFTS | 48. WOODWORK |
| 5. LEAGUE OF FRIENDS | 49. METAL ART |
| 6. BEXHILL HERITAGE | 50. TOYS, LEGO, JEWELLERY |
| 7. HANDMADE CRAFTS | 51. CRAFT |
| 8. HANDMADE CRAFTS | 52. MEAD, WINE PRESERVES |
| 9. AUTOJUMBLE | 53. RNLI |
| 10. CHIROPRACTIC CLINIC | 54. BEXHILL 100 STAND |
| 11. TYRE PROS | 55. BEXHILL LIONS |
| 12. RBL TOMBOLA | 56. FALAFEL BOX |
| 13. INSTITUTE OF ADVANCED MOTORISTS | 57. KEITH WENHAM |
| 14. 9th BEXHILL SCOUTS GROUP | 58. PIZZA SHED |
| 15. BRIC-A-BRAC | 59. ICE CREAM |
| 16. 3D PRINTING | 60. BEXHILL COMMUNITY BUS |
| 17. CANINE PARTNERS | 61. GERMAN SAUSAGE HUT |
| 18. 1940's PEDAL CARS | 62. MUCKY DUCK |
| 19. BEXHILL ROTARY | 63. SUSSEX HOG ROAST |
| 20. PHOTOGRAPHY | 64. FLAME MADE PIZZA |
| 21. CRAFT, PEBBLE PICTUES | 65. ICE CREAM |
| 22. CAR DETAILING PRODUCTS | 66. KEITH WENHAM |
| 23. JESUS LOVES BEXHILL | |
| 24. ASSOCIATION OF CARERS | |
| 25. BEXHILL MUSEUM | |
| 26. MODEL CARS | |
| 27. RSPCA | |
| 28. BOOKS/MAGAZINES | |
| 29. SECONDHAND BOOKS | |
| 30. HARRIS TWEED CLOTHES & BAGS | |
| 31. DECORATIVE TEXTILES | |
| 32. KNITTED GOODS | |
| 33. COMMUNITY SUPPORTERS | |
| 34. LITTLE BARKERY | |
| 35. SWEET TOOTH TREATS | |
| 36. AUTOJUMBLE | |
| 37. SUSSEX ADVANCED DRIVERS | |
| 38. FUNNY HEN SECRET BOUTIQUE | |
| 39. SPITFIRE MOTORING | |
| 40. TOOLS & ACCESSORIES | |
| 41. PLANTS | |
| 42. MOBILE GAMING VAN | |
| 43. TRINKETS | |
| 44. SWEETS | |



NEIL JESSOP



1978 Ford Escort mk2

Zakspeed Group 5 tribute.

The original car was dominant in the German touring car series DRM in the late 70's and was thought of as the ultimate racing Escort.

Although this car is modern spec, with 320bhp and weighing just 700kg, the performance is similar to the original.

2.4 litre Ford Duratec engine
Sadev 6 speed sequential gearbox
Atlas axle
Penske coilover shocks
AP brakes
Lightweight carbon fibre panels

Currently racing with Modified Ford Series at circuits around the UK. This is the premier race series for classic fords in this country.

I've had many great battles on track over the last few years and results including outright wins, class wins and lap records at several circuits.





TOOLS BY POST

THORCRAFT

TOOL SHOP



SUPPLYING TOOLS SINCE 1960
MACHINERY, HARDWARE, FIXINGS
WELDERS & CONSUMABLES
HAND & POWER TOOLS



Stop Paying Rental



Try our range of rent free welding cylinders and see how much you can save





Unit 4, Haywood Way, Ivyhouse Industrial Estate, Hastings TN35 4PL

01424 717453 • www.toolsbypost.com



SUPERIOR SOLUTIONS

We supply Qualified, Experienced
Local Staff, Dedicated to Delivering
Excellent Service.

Compassionate. Reliable. Always Here for You.
Your Trusted Partner in Healthcare Staffing

- Trained Healthcare Assistants & Support Workers
- 24/7 Staffing Availability
- Easy Shift Booking via BrightHR
- CQC-Ready & DBS-Checked Professionals
- Emergency, Short-Term & Long-Term Cover

WHY CHOOSE US?

- Dedicated Account Managers
- Fast Response Time
- Based in Bexhill-on-Sea, Serving the South East

Contact Us

☎ 01424 212199
☎ 07707 468844



🌐 www.holisticcareinnovation.co.uk

info@holisticcareinnovation.co.uk

Victoria Works, Victoria Road, Bexhill-On-Sea, East Sussex, TN39 3PD



SHOW TROPHIES 2025

BEST BEXHILL 100 CAR

Presented by Cllr Abul Azad

BEST PRESENTED ENGINE

Judged by Ryan Hollebon

BEST CLASSIC CAR

Presented by Trenchline Utilities

BEST CUSTOM CAR

Presented by Chris & Heidi Speck

BEST AMERICAN CAR

Presented by Maurice Takoor

BEST COMMERCIAL VEHICLE

Presented by Trenchluine Utilities

BEST BIKE OR SCOOTER

Presented by Alan Timms

BEST MODIFIED CAR

Judged by Ryan Hollebon

All trophies will be presented to owners at their vehicles during the day

CHARITABLE ORGANISATIONS

This year our members have selected the following local charitable
organisations to benefit from the profits of our show:-

Bexhill Beach Garden

Bexhill Heritage

Hastings RNLi

Association of Carers

trenchline

UTILITIES LIMITED

BUILDING TOMORROW, TODAY



Specialising In:

- Concrete
- CAD Drawings
- Dropped Kerbs
- Moling
- Trenching
- CCTV Surveys
- Cat Scanning
- Surfacing
- Slurry
- Grab Services
- Footpath Reconstruction
- Traffic Management



01424 215 345



NINFIELD AUTO RESTORATION provide a one-stop solution for all automotive services in Ninfield and the surrounding areas. We provide a high quality service at competitive prices, undertaking repairs to all makes and models, specialising in the full or partial restoration of classic and vintage vehicles, working with the customer to achieve their aims.

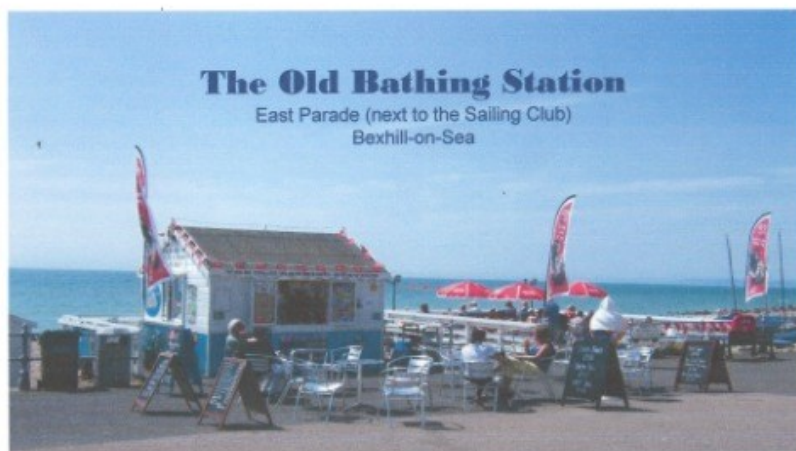
STEVE PARKER
Unit 1 Highways Park
Catsfield Road, Ninfield,
Battle, East Sussex TN33 9JA

01424 893569

07702 498 686

Parkersteve58@aol.com

Visit our workshop for a no obligation quotation



The Old Bathing Station

East Parade (next to the Sailing Club)
Bexhill-on-Sea

Fantastic family run kiosk situated directly on the seafront, relax on the new decking whilst gazing out to sea.

Offering hot snacks, sandwiches, drinks, delicious luxury cakes and ice creams.

Open 7 days a week



Sovereign Light Cafe

The café that inspired the pop group Keane's
hit single

'Sovereign Light Cafe'

Ideally situated on Bexhill's new and exciting West Parade promenade with uninterrupted sea views.

Serving a large selection of freshly cooked meals including roast dinners, fish and chips
and delicious all day breakfasts.

Morning Coffee, Light Lunches, Afternoon Tea, Ice-Creams, Homemade Cakes and Snacks also available so
why not pay us a visit today?

DINE & UNWIND BY THE SEA

Open 7 days a week – Tel: 01424 222136

trenchline
UTILITIES LIMITED

Why Trenchline Utilities Limited is Proud to Sponsor the Bexhill 100's 20th Anniversary Classic & Custom Car Show

At Trenchline Utilities Limited, we are thrilled to be sponsoring the Bexhill 100 Motoring Club's Classic & Custom Car Show, held at the The Polegrove recreation ground in Bexhill on August Bank Holiday Monday, especially as this year, the event celebrates its 20th anniversary. As a local construction company with a deep commitment to community engagement, we are honoured to be part of such a prestigious event that not only brings together motoring enthusiasts, but also contributes so generously to charitable causes.

Our Directors are lifelong classic car enthusiasts, and joining the Bexhill 100 MC was a natural step for us. We believe in the importance of preserving and celebrating the history of motoring, and the Polegrove show perfectly encapsulates the passion and spirit of the car community.

This year, we are especially excited to be part of the club's efforts to help surpass the remarkable £200,000 milestone in charitable donations. As a company, we strongly believe in giving back to the community that supports us, and we are proud to be contributing to such a worthy cause. Through our sponsorship, we hope to help raise awareness, increase attendance, and support the event's ongoing success.

We look forward to being part of this memorable occasion and are excited about the positive impact it will have on both the classic car community and the charitable organizations that benefit from the show's proceeds.

Here's to a fantastic 20th anniversary and to achieving great things together!



REGALIA

We have a wide range of clothing in a variety of colours and sizes as shown in the attached images; full details of which may be found on our website by first selecting 'Menu' then 'Regalia'.

Come and visit 'Lady Regalia' at our stand where you will be assured of a hearty welcome!



70 Years of

ELVA

"elle va" (she goes)

1955 to 1968

Frank G. Nichols (Mr. Elva) was born on 29th August 1920 in Bexhill, East Sussex.

The Elva company built their first car, a Mk.1 sports race car with a Ford E93A engine and an Elva cylinder head conversion in early 1955 behind the York Hotel in London Road, Bexhill.

The town was named 'The Birthplace of British Motor Racing' in 1994, as it had hosted the first recorded motor speed event on 18th May 1902, which ran along the seafront from Galley Hill.

Frank rented additional space around the town to build and store more vehicles as Elva became of interest to the motorsport community as a car to race, appearing alongside those from Lola, Lotus, MG and Triumph. Cars built by the company in period included front and rear-engine Juniors, sports race cars from Mk.1 to Mk.8, road and race Couriers and the beautiful BMW-powered Elva GT160 which attracted much attention at the Earls Court and Turin Motor Shows, but never went into full production. The company also built the first McLaren Can-Am car, the McLaren-Elva Mk 1A.

Elva drivers of note include Graham Hill, Sir Stirling Moss, Bruce McLaren, Carl Haas, Tony Lanfranchi and Elvis Presley in addition to a comprehensive list of over 2000 other drivers.

Elva later moved from Bexhill to Hastings, then Rye and Croydon.



Classic Car Electrics

07858 431693

- Mobile service
- Vehicle electrics
- Fault finding
- Wiring faults
- Complete rewires
- Electric accessories fitted
- Addition extras
- Kit car electrics



40+ years of experience – High-quality workmanship – Reliable – Friendly, personal service Classic car specialist – Free quotes – Mobile service, I come to you.

For a classic car Auto Electrician, you can rely on, do not hesitate to

call me Vic Callaghan-Smith on 07858 431 693

www.classiccarelectrics.co.uk



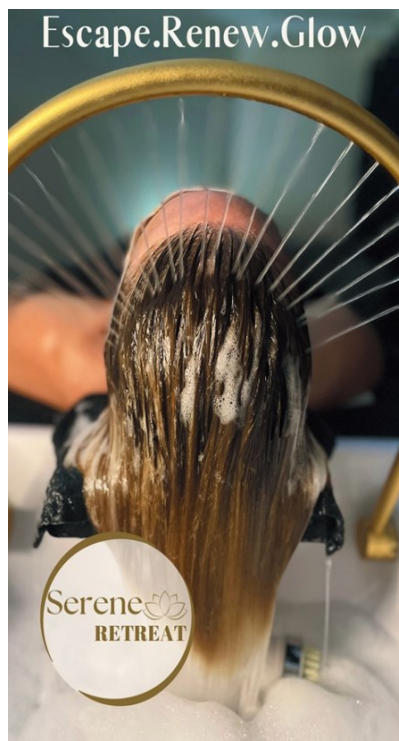
Motoring Club

BEXHILL 100 MOTORING CLUB CLASSIC & CUSTOM CAR SHOW

OVER THE PAST 19 YEARS OUR SHOW HAS RAISED £180,000 FOR LOCAL CHARITABLE ORGANISATIONS WHICH ARE LISTED BELOW

1066 SPECIALS FOOTBALL CLUB
4 X 4 ASSIST RESPONSE DRIVERS
ASSOCIATION OF CARERS
BARBY KEEL
BEXHILL CARING COMMUNITY
BEXHILL COMMUNITY BUS
ST MICHAELS HOSPICE
BEXHILL COMMUNITY CENTRE
THE PELHAM CENTRE
BEXHILL COMMUNITY FIRST RESPONSE
BEXHILL GATEWAY CLUB
BEXHILL HERITAGE
BEXHILL HOSPITAL IRVINE UNIT
BEXHILL MUSEUM *ELVA PROJECT*
CANINE PARTNERS
CHARITY FOR KIDS (HASTINGS & ROTHER)
CHESTNUT TEE HOUSE
CHILDREN WITH CANCER
CONQUEST HOSPITAL SPECIAL CARE BABY UNIT
DEMLZA CHILDREN'S HOSPICE
EASTBOURNE RNLI
EAST SUSSEX DISABILITY ASSOCIATION
EAST SUSSEX FIRE CADETS (BEXHILL)
EAST SUSSEX YOUNG CARERS
FELLOWSHIP OF ST NICHOLAS
GLYNE GAP SCHOOL
GOLDEN MARIGOLD CLUB
GUIDE DOGS FOR THE BLIND
HASTINGS & ROTHER FRIENDS
HASTINGS RNLI
HOMECALL
KENT & EAST SUSSEX AIR AMBULANCE
LITTLE COMMON COMMUNITY CENTRE
MS SOCIETY
PEBSHAM 1066 RBA CENTRE
PEBSHAM COMMUNITY CENTRE
PITSTOP
RBL MAIS HOUSE
RESPIRE REHABILITATION CARE CENTRE

SARA LEE TRUST
SCOPE
SERV SUSSEX
SHINING LIGHTS
SPECIAL KIDS BEXHILL



Serene RETREAT

Sink into Bexhill's first true Japanese Head Spa...

Hidden away in the heart of Bexhill, Serene Retreat invites you to slip out of the everyday and sink into a world of pure Japanese inspired tranquillity.

Experience our signature Head Spa – a warm, flowing ritual that cleanses the scalp, nourishes the hair, and hushes the mind. Surrender to tailored facials, tension-melting massages and rejuvenating reflexology, all crafted to restore your natural glow.

Step inside and discover why indulgence here is never just a luxury, it's your new way to feel alive.



"I cannot recommend Rachel at Serene Retreat enough! I had the Japanese Head Spa with the facial and oh wow I was blown away at how relaxing and amazing it was! My hair was silky smooth and my skin felt amazing, already can't wait to come back and have another treatment."

"If you're thinking of booking in then this is your sign to do so!"
—Happy Client.



sereneretreat-sr

BOOK YOUR SERENE ESCAPE TODAY

Address

Charter House St Leonard's Road,
Bexhill On Sea, TN40 1JA

Email

sereneretreat-sr@outlook.com

Facebook

Serene Retreat

Telephone

07498511159

THIS YEAR WE HOPE TO EXCEED £200,000 !!!



 **Adam Traditional Barber** 
 **113 London Road**
Bexhill-on-Sea
TN39 3LB
Stay Sharp.

Adam Traditional Barber

has donated 6 haircuts which will be given out during the show

Chris Knott Insurance

Specialist protection for custom, classic, modified, kit and everyday cars



WHY CHRIS KNOTT?

- ✓ Competitive premiums for modern, modified or classic cars
- ✓ Agreed Value and Limited Mileage policies available
- ✓ Option to use your preferred repairer if you have one
- ✓ Personal service from qualified experts in Hastings

Request a quote using the code BEX/100

0800 917 2274

chrisknott.co.uk/carquote




CAR INSURANCE + EXCESS PROTECTOR + BREAKDOWN COVER

Providing specialist cover for enthusiasts' treasured cars for 40 years

Chris Knott Insurance, 5th Floor, Cavendish House, Breads Place, Hastings, East Sussex, TN39 3AA.
Chris Knott Insurance is authorised and regulated by the Financial Conduct Authority







CROWHURST PARK *Holiday Village*

Join our
friendly health
club from
under £33 a
month

Make 2025 the year of better health

We offer a range of memberships to suit every pocket & schedule. Join now and make use of our excellent facilities, including:

- Air Conditioned Gym full of the latest equipment
- Spacious 18m x 18m pool, including shallow kids splash pool
- Sauna, steam room & jacuzzi
- A range of classes included, from Yoga to Salsa Aerobics
- Tennis Court
- Members receive 20% off all Spa Treatments



DID YOU KNOW...?

When you own a Holiday Home here at Crowhurst Park, it comes with a whole host of benefits, such as:

6 FREE MEMBERSHIPS TO THE HEALTH CLUB
20% OFF RESTAURANT & BAR PURCHASES
ACCESS TO EXCLUSIVE OWNERS ONLY EVENTS
20% OFF ALL SPA TREATMENTS
HOMES AVAILABLE FROM £10,000
UPWARDS

VISIT OUR WEBSITE FOR MORE INFORMATION AND TO SIGN UP ONLINE TODAY!

www.crowhurstpark.co.uk



CHILDREN'S ENTERTAINMENT



[Uncle Bumble throughout the day](#)



RUBY'S DUCK HUNT

See Ruby in the Registration Tent for details of the Duck Hunt. Find the ducks. Solved the clues. Win a prize and get entered into a prize drawer at 3.30pm

COLOURING COMPETITION



Drop your entries off at the Registration Tent to enter.

Ages 7 – 11 – 1st, 2nd & 3rd various prizes

Ages 12 – 16 1st, 2nd / & 3rd various prizes

Judging will be throughout the day and finalists will be announced at 4pm.

[COLOURING COMPETITION SPONSORED BY SRC ROOFING](#)



**SRC
ROOFING**

YOUR ROOF, OUR PASSION!

From small repairs to full re-roofs
Lead work
Flat Roof Specialist
Fully Insured



info@srcroofing.co.uk




07856 318433



@src_roofing_



SRC Roofing



MOOR HALL LAKES
MOOR HALL FARM
NINFIELD, EAST SUSSEX
TN33 9JT

DAY TICKETS £10 (2 RODS)

PAY ON THE BANK, JUST TURN UP AND FISH

COMMON AND MIRROR CARP (25lb+)
 TENCH (5lb+) PERCH (4lb+) ROACH & RUDD (2lb+)

CAR PARK AND TOILET ADJACENT TO LAKE

LAKES CLOSED 1ST MAY - 15TH JUNE

CONTACT: CHAS ROWLAND 01424- 223354 MOBILE 07753997401
 E-MAIL: rowallenfish@aol.com Facebook: Moor Hall Lakes



@hpc_classics
 @hpcclassics

HPC CLASSICS
 ROAD & RACE SPECIALISTS

Full stock list

Classic, prestige & sports car sales & servicing
 All makes and marques catered for

1963 Jaguar E-type S1 - £79,995 _{ono}	2017 Jaguar F-type - £33,995 _{ono}	1969 Jaguar E-type S2 - £74,995 _{ono}
1992 TVR Griffith - £44,995 _{ono}	1957 Austin Healey 100/6 - £54,995 _{ono}	2001 TVR Tuscan S - £47,495 _{ono}
2001 Ferrari 360 - £69,995 _{ono}	1981 BMW M535i - £37,495 _{ono}	1954 Jaguar XK120 - £89,995 _{ono}

www.hpcclassics.co.uk | +44 (0)7834 228821 | miles@hpcclassics.co.uk
 Unit 11-12 White Knight Business Park, 10 Hammonds Drive, Eastbourne, BN23 6FB

AMERICAN/HOTRODS

300	STEVE EYLES	BEXHILL ON SEA	CHEVROLET	BEL AIR	1958
301	BRUCE SIEVWRIGHT	WITTERSHAM	DODGE	CHALLENGER	2015
302	MICK WILTSHIRE	DARTFORD	CHRYSLER	PT CRUISER	2000
303	W & K STONEHAM	HEXTABLE	CHRYSLER	PT CRUISER	2006
304	MICHAEL O'BRIEN	BATTLE	FORD	MUSTANG FOX BODY	1982
305	GARY CABLE	BURNHAM ON CROUCH	FORD	MUSTANG	2005
306	JEFF GOLD	LITTLE HAMPTON	CHRYSLER	PT CRUISER, ROUTE 66	2005
307	DENNIS SIMPSON	BRIGHTON	CHEVROLET	CORVETTE STINGRAY	1971
308	TONY MURKIN	CROYDON	CHEVROLET	CORVETTE STINGRAY	1971
309	JOHN SLATER	OLD COULSDON	CHEVROLET	CORVETTE STINGRAY	1965
310	ANDY HOGG	ASHFORD	FORD	23 T BUCKET, HOT ROD	1976
311	PAT MILES	SOUTH CROYDON	FORD	PICK UP	1940
312	MARTIN KELLY	EAST GRINSTEAD	CHEVROLET	150 2 DOOR SEDAN	1957
313	BRIAN BRUCE	ORPINGTON	OLDSMOBILE	HOLIDAY COUPE	1951
314	KURT CLARKE	BEXHILL ON SEA	CHEVROLET	C3 CORVETTE	1976
315	MICHAEL REEVES	HORSMONDEN	FORD	MUSTANG GT	1966
316	ALAN COLES	LYDD	CHEVROLET	CORVETTE STINGRAY	1973
317	TONY BROWN	MAIDSTONE	CHEVROLET	CORVETTE COUPE	1980
318	GARY FRANSHAM	WALLINGTON	FORD	MODEL A	1929
319	STEVE COGGER	CROYDON	FORD	MODEL A	1931
320	ALEXANDER SMITH	SHEERNESS	CHRYSLER	PT CRUISER	2002
321	CARL GREENWELL	CRAWLEY DOWN	FORD	MUSTANG	2016
322	PETER ARMSTRONG	ST LEONARDS ON SEA	MERCURY	COUGAR	1967
323	PAUL SINGER	NEWHAVEN	PLYMOUTH	DUSTER	1971
324	KEVIN BONIFACE	SEAFORD	CHEVROLET	BEL AIR	1957
325	TED VINALL	HAWKHURST	DESOTO	FIREFLIGHT	1959
326	NEIL PERRIN	HORAM	CHEVROLET	SSR	2004
327	STEVE HAYWARD	BRIGHTON	FORD	MUSTANG	1970
328	MICK NORMAN	BEXHILL ON SEA	FORD	MUSTANG COUPE	1966
329	IAN STEVENS	HAILSHAM	FORD	MUSTANG	1969
330	GEORGE GASKIN	HORAM	FORD	MUSTANG	1966
331	RICHARD MOULAND	BRIGHTON	FORD	MUSTANG GT350	2006
332	ANDY MARKS	EASTBOURNE	CHEVROLET	CAMARO	1967
333	MARK WORTHINGTON	BEXHILL ON SEA	CHRYSLER	C M COUPE	1931
334	DES STORK	EASTBOURNE	FORD	MUSTANG	1966
335	ALEX BUZENCHI	SIDCUP	CHEVROLET	CAMARO SS	2010
336	COLIN MASTERSON	SISSINGHURST	CHEVROLET	CORVETTE STINGRAY	2016
337	HARLEY CANNON	WALLINSTON	CHEVROLET	SPORTS COUPE	1937
338	STEVE PAYNE	HASTINGS	FORD	MUSTANG	1967
339	ANDREW PELLETT	EASTBOURNE	DODGE	CHARGER	1972
340	BRIAN NEAL	ST LEONARDS ON SEA	FORD	GALAXY FAIRLANE	1959
341	PETE GRANGE	ST LEONARDS ON SEA	AC	COBRA	2018
342	DAVID MOYCE	SEDLSCOMBE	CHRYSLER	CROSSFIRE	2005
343	NIGEL SMITH	CROWBOROUGH	FORD	MUSTANG	1966
344	HUGH ALLEN	HEATHFIELD	HUMMER	A2 1097	2002
345	RICHARD WILKINS	ETCHINGHAM	BUICK	WILDCAT	1963

MOTORCYCLES

380	LEE SHADWELL	BEXHILL ON SEA	LAMBRETTA	JET 200	1980
381	PAUL POLLINGTON	TONBRIDGE	HONDA	CB400 SUPERSPORT	1976
382	MIKE HAYMAN	BEXHILL ON SEA	LAMBRETTA	GP 3-WHEELER	1970

If you're between 13 and 17, join our Fire Cadets! During your time on the programme, you'll make new friends, have loads of fun and learn all about what it means to be a firefighter and make a positive impact on your community.



If you are interested in joining or sponsoring Fire Cadets please email fire.cadets@esfrs.org

5 reasons to sponsor Fire Cadets

- Give young people the best possible start – the Fire Cadets makes an incredible difference to young lives. And that's an incredible thing to be part of.
- Make a real difference – Fire Cadets is a really positive involvement in social action and improving community cohesion.
- Make your place safer – increased awareness of how to reduce fires and anti-social behaviour contributing to the enhancement of local communities.
- Boost your brand – associate with the hugely respected and well-known brand that is East Sussex Fire and Rescue Service, and the innovative new uniformed youth service that is Fire Cadets.

Feel connected – be part of our firefighting and rescue family, respected around the world.



VEHICLE ENTRIES 2025

BEXHILL 100 MEMBER'S VEHICLES

100	CHRIS SPECK	BATTLE	JAGUAR	XJ12 SERIES 2	1973
101	CHARLIE ROWLAND	BEXHILL ON SEA	HUDSON	SUPERSIX BUSINESS COUPE	1947
102	CHARLIE ROWLAND	BEXHILL ON SEA	LANCIA	2000	1973
103	LEWIS BOSHER	NORTHAM	FORD	CAPRI L MK3	1981
104	SARAH M HILL	UCKFIELD	TOYOTA	SERA	1990
105	HELEN DAY	EWHURST GREEN	VW	T2 CAMPER	1978
106	ALAN REEVES	BREDE	CHEVROLET	CAMARO SS	1998
107	ROGER GARDNER	BEXHILL ON SEA	PORSCHE	993 C4	1995
108	LEE & VALERIE POWELL	BEXHILL ON SEA	ROVER	P6 2000TC SERIES 2	1972
109	FIONA HEMSWORTH	BEXHILL ON SEA	MG	BGT SEBRING REPLICA	1972
110	TRISTAN HEMSWORTH	CLAPTON	VOLVO	245DL AUTO ESTATE	1978
111	MARK HAMMETT	BEXHILL ON SEA	MG	TF 160	2004
112	TONY GILLARD	BEXHILL ON SEA	AUSTIN	A60 PICK UP	1971
113	NIGEL ROBINSON	ST LEONARDS ON SEA	FORD	MUSTANG	1966
114	NIGEL ROBINSON	ST LEONARDS ON SEA	VW	BEETLE	1967
115	BRADLEY VAN-CLIFF	BEXHILL ON SEA	AUSTIN	A40 FARINA	1959
116	GAVIN BARTHOLOMEW	BEXHILL ON SEA	FORD	HIDE-A-WAY	1959
117	PAUL BRAILSFORD	BEXHILL ON SEA	TRIUMPH	TR6	1971
118	PAUL BRAILSFORD	BEXHILL ON SEA	FORD	SIERRA RS COSWORTH	1987
119	PAUL BRAILSFORD	BEXHILL ON SEA	ELVA	COURIER	1958
120	RAYMOND GORDON	KEMSING	MG	B ROADSTER	1979
121	PHIL CAPONE	BEXHILL ON SEA	CHEVROLET	CORVETTE STINGRAY	1976
122	ANDREW WILSON	BEXHILL ON SEA	AUSTIN	SEVEN RUBY	1938
123	SAM JOLLEY	ORPINGTON	SUSUKI	SWIFT	2007
124	LAUREN JOLLEY	ORPINGTON	LANDROVER	RANGE ROVER	2006
125	JOHN JENKINS	BATTLE	BMW	325i CABRIOLET	1990
126	RAYMOND YORKSHIRE	POLEGATE	CHEVROLET	CORVETTE C6 COUPE	2007
127	JEFF WEBB	BEXHILL ON SEA	JAGUAR	E TYPE 2+2	1971
128	BRIAN SMALLCORN	ARLINGTON	CHEVROLET	(FORMERLY CAPRICE)	1976
129	JULIA HALL	BEXHILL ON SEA	MORRIS	MINOR CONVERTIBLE	1965
130	RICHARD HALL	BEXHILL ON SEA	MG	BGT	1970
131	TERRY GOODHEAD	BEXHILL ON SEA	FORD	MK3 CAPRI LASER	1984
132	NICK TUTT	BEXHILL ON SEA	DAVRIAN	MK 5	1972
133	DAVID & KIM HEDGES	PEVENSEY	TRIUMPH	VITESSE CONVERTIBLE	1969
134	ANDREW GREEN	SEAFORD	TRIUMPH	VITESSE	1968
135	JOHN SKINNER	BROAD OAK	WOLSELEY	1500 SALOON	1960
136	ALAN TIMMS	BEXHILL ON SEA	MG	B ROADSTER LTD EDITION	1981
137	ANDREW LEGGATT	BEXHILL ON SEA	FORD	CORTINA MK2 1600E SERIES 1	1968
138	DAVID LEES	NINFIELD	JAGUAR	E TYPE, S1 CONVERTIBLE	1966
139	GRAHAM DAVIS	BEXHILL ON SEA	MORRIS	1100	1963
140	PETER HEATHER	BEXHILL ON SEA	EDSEL	CORSAIR CONVERTIBLE	1959
141	ADAM FARLEY	HAILSHAM	TRIUMPH	STANBURY TT	1968
142	DAVID LEES	HOOE	JAGUAR	E-TYPE ROADSTER	1966
143	KEITH PITCHER	POLEGATE	TRIUMPH	MK2 2500 SALOON	1974
144	JOHN GARDNER	BEXHILL ON SEA	MORRIS	TEN	1932
145	BRIAN BERGMAN-FIELD	ST LEONARDS ON SEA	AUSTIN	HEALEY SPRITE MK1	1958
146	BRIAN BERGMAN-FIELD	ST LEONARDS ON SEA	MG	M TYPE	1932
147	RAYMOND MCCRYSTAL	ST LEONARDS ON SEA	PLYMOUTH	VALIANT	1965
148	GERALD FORD	PEASMARSH	MORRIS	COWLEY BULLNOSE	1923
149	TIM BAILEY	ST LEONARDS ON SEA	FORD	CAPRI 2.8 SPECIAL	1984
150	ANDREW WILSON	EASTBOURNE	FORD	ESCORT	1999
151	RICHARD MOORE	BEXHILL ON SEA	JAGUAR	MK2	1963
152	JOHN MILES	FAIRLIGHT	AUSTIN	SPRITE (NOT HEALEY)	1971
153	JEREMY STOCK	HASTINGS	MG	B ROADSTER	1967
154	CHRIS HALL	BEXHILL ON SEA	MG	A MK1	1958
155	MARTIN SEIBERT	BEXHILL ON SEA	ROVER	MINI COOPER	1998

220	JAMIE MILES	WARLINGHAM	HONDA	CIVIC	1991
221	GARY MILES	WARLINGHAM	FORD	CAPRI	1973
222	CHRIS WYNNE	ST LEONARDS	MG	B ROADSTER	1968
223	TOM HAYNES	SIDCUP	TRIUMPH	TR3A	1959
224	ISABELLE THORNTON	ST LEONARDS	TOYOTA	GT86	2013
225	RACHEL TIMSON	ST LEONARDS	FORD	ESCORT	1990
226	BARRY O'DONOVAN	LONDON	LANCIA	BETA	1979
227	ANDY BARKEL	WITTERSHAM	TRIUMPH	STAG	1973
228	GRAHAM MEPHAM	WITTERSHAM	TRIUMPH	TR6	1971
229	MARK ROFFE	TONBRIDGE	MG	B ROADSTER LE	1981
230	JODIE GADD	HOVE	FORD	CORTINA MK2 ESTATE	1970
231	BARRIE GARNER	BEXHILL ON SEA	JAGUAR	E-TYPE SERIES 3	1972
232	ROBERT CHUTER	HAILSHAM	FORD	CAPRI XL	1974
233	ROY SMITH	WILLINGDON	TRIUMPH	STAG	1975
234	DAVID MOLE	UCKFIELD	TRIUMPH	STAG	1977
235	ELEANOR GAUSDEN	BATTLE	AUDI	S3	2008
236	MARTIN GAUSDEN	BATTLE	BMW	M 5	2012
237	ELAINE GAUSDEN	BATTLE	FIAT	595 ABARTH	2016
238	KEITH ALLEN	BEXHILL ON SEA	HUMBER	SCEPTRE	1966
239	JAMES PFAFF	BEXHILL ON SEA	VW	POLO GT	1991
240	HELEN HAZELWOOD	FLIMWELL	VW	WIZARD	1973
241	PHILIP PARMENTER	UCKFIELD	MG	MAGNETTE ZB	1957
242	RICHARD POPE	BATTLE	JAGUAR	F-TYPE	2017
243	ALAN BEAL	WADHURST	TRIUMPH	SPITFIRE	1976
244	MIKE HALLETT	HAWKHURST	MORRIS	ROYAL MAIL VAN	1968
245	PAUL SHILLAKER	NEWBURY	MG	BGT	1979
246	RICHARD CAIE	BEXHILL ON SEA	FORD	ESCORT XR3i	1986
247	FARAGE EL HSPD	STONE CROSS	PORSCHE	911 (964)	1990
248	ROY LAMING	STAPLEHURST	VW	T2 CAMPER	1971
249	ANTHONY HAWKINS	BEXHILL ON SEA	MERCEDES	300SL	
250	TONY GREER	POLEGATE	VOLVO	480 GT	1994
251	PETER TURNER	UCKFIELD	TRIUMPH	HERALD 1360	1969
252	JULIAN NORRIS	WARLINGHAM	JAGUAR	E-TYPE	1973
253	LEE GOACHER	SEAFORD	RENAULT	17	1975
254	DONALD BARHAM	BATTLE	LOTUS	EXCEL SE	1987
255	NICK SUTTON	HASTINGS	JAGUAR	XJ5	1987
256	NEIL LENEY	EASTBOURNE	TOYOTA	MR2 MK1	1987
257	MARK OSBORN	EASTBOURNE	ASTON MARTIN	DB5	1965
258	DARREN CHITTENDEN	CANTERBURY	MORGAN	PLUS FOUR	2009
259	COLIN MOYCE	RYE	DATSUN	260 Z ROADSTER	1974
260	PETER FITCH	SHEERNESS	FORD	SIERRA RS COSWORTH	1989
261	ANDREW MYATT	DARTFORD	AUSTIN	1300	1973
262	CHARLIE CASEY	BEXHILL ON SEA	LEXUS	RX400H SPECIAL EDITION	2009
263	STUART JAMES	FAIRLIGHT	ROVER	P6B	1975
264	HUGH JENNER	TONBRIDGE	AUSTIN	ALLEGRO	1975
265	GARY BINGHAM	BEXHILL ON SEA	RENAULT	25 MONACO	1986
266	DAVID BAKER	TONBRIDGE	MG	F	1999
267	BRADLEY O'TOOLE	ST LEONARDS	VW	POLO	1993
268	BRAD HARDY	BEXHILL ON SEA	LEXUS	IS	2004
269	GREG PHILLIPS	TUNBRIDGE WELLS	FERARRI	F430	2009
270	NIGEL NORMAN	WORTHING	TRIUMPH	TR7	1981
271	BARRY HEASMAN	HORSTED KEYNES	ASTON MARTIN	DB9 VOLANTE	2006
272	PETER HUMES	BRIGHTON	FORD	FIESTA	1999
273	BARRY SPURGEON	POLEGATE	MORRIS	4 DOOR SALOON	1959
274	LEO WALLER	MITCHAM		MINI	
275	VONNIE LEE	HAILSHAM	AUSTIN	A30	1955
276	DEREK HARRIS	ASHFORD	AUSTIN	HEALEY FROGEYE SPRITE	1958
277	NIGEL BUTTON	EASTBOURNE	ASTON MARTIN	DB4	1962

163	MARK STINSON	BRIGHTON	DAIMLER	MAJESTIC MAJOR	1961
164	MATT TAYLOR	DORKING	SUBARU	LEGACY GTB WR LTD	2004
166	MARK BAREHAM	FAVERSHAM	LOTUS	ELITE	2015
167	SAM REED	ST LEONARDS	HONDA	CIVIC TYPE R	2003
168	SAM REED	ST LEONARDS	VAUXHALL	ASTRA VXR	2008
169	TIM STURDY	ST LEONARDS	FORD	ESCORT	1997
170	TIM STURDY	ST LEONARDS	VW	GOLF	1999
171	DAVE PAUL	SEAFORD	PORSCHE	993 CARERA 2 VOUE	1997
172	GEOFF YARNELL	ST LEONARDS	LEYLAND	PD2 H58R BODY	1951
173	MRS ANNE BOURNE	MARK CROSS	WOLSELEY	1500 MKIII	1964
174	TREVOR RALPH	EAST GRINSTEAD	ASTON MARTIN	V8 SALOON	1972
175	PETER COPE	TUNBRIDGE WELLS	MG	B ROADSTER	1963
176	GRAHAM WOOD	BURWASH	SS	ONE & HALF SALOON	1939
177	ALLAN MCCORMACK	ETCHINGHAM	ASTON MARTIN	DB9	2004
178	JOHN SANDERSON	EASTBOURNE	TRIUMPH	STAG	1974
179	MICHAEL HODGSON	BECKLEY	AUSTIN	A40 SPORTS	1952
180	PASCAL PILLAY	BATTLE	HONDA	INTEGRA DC5	2001
181	PASCAL PILLAY	BATTLE	NISSAN	S14	1996
182	PASCAL PILLAY	BATTLE	HONDA	CIVIC GT	1987
183	JAMIE COWLEY	BEXHILL ON SEA	FORD	FIESTA ST	2013
184	PETER BURGESS	PEACEHAVEN	AUSTIN/MORRIS	MINI 1275 GT	1980
185	IAN PUNTER	BUXTED	MATRA	M530 LX	1971
186	DEREK LOWERS	BEXHILL ON SEA	JAGUAR	X TYPE	2008
187	MATTHEW HILL	ST LEONARDS	VAUXHALL	VX220 TURBO	2005
188	MATTHEW HILL	ST LEONARDS	LOTUS	EVORA S SPORT RACER	2015
189	BRIAN WALKER	ASHBURNHAM	LEA FRANCIS	SPORTS TOURER	1952
190	STEVEN KEMP	BEXHILL ON SEA	MITSUBISHI	EVO 9	2007
191	AMBER WILLIAMS	BEXHILL ON SEA	HONDA	CIVIC TYPE R	2003
192	RUSSELL POWELL	ST LEONARDS	LANDROVER	109 STAGE 1 V8	1981
193	DAVE LAMPARD	SEDLSCOMBE	FIAT	600D	1969
194	DAVE LAMPARD	SEDLSCOMBE	JAGUAR	E TYPE	1962
195	BOB JANES	LITTLEHAMPTON	NISSAN	300ZX Z31	1988
196	JOHN CORBIN	HORLEY	TOYOTA	CELICA SUPRA	1985
197	RICHARD THORPE	ROLVENDEN	MG	ZR TSE	2005
198	BRADLEY PICKING	WITNEY	NISSAN	PRIMERA GT LE	1999
199	ANDY ACRES	HASTINGS	AUSTIN	HEALEY FROGEYE SPRITE	1959
200	GARY SILVER	NORTH CHAILEY	TRIUMPH	STAG	1976
201	ANDY ACRES	HASTINGS	MG	MIDGET	1977
202	PAUL HART	ORPINGTON	FORD	CAPRI	1986
203	K HAMLIN-BRIGNALL	HOOE	AUSTIN HEALEY	3000 MK1 BN7	1959
204	JOHN BAGGOTT	LANGTON GREEN	MG	BGT	1969
205	MICHAEL JOBSON	UCKFIELD	JAGUAR	XK150	1958
206	ROBERT MARSH	BEXHILL ON SEA	MADISON	ROADSTER	1985
207	RAY JARY	GILLINGHAM	MORGAN	PLUS 8	1998
208	PAUL BEATON	TENTERDEN	PANTHER	KALLISTA 2.8	1986
209	DAVE PIGGOTT	TONBRIDGE	WOLSELEY	HORNET	1965
210	IAN STEGGLES	BEXHILL ON SEA	MG	F SE STEPTRONIC	2001
211	LOUIS TRIPP	HEATHFIELD	SUBARU	IMPENZA	2004
212	BRUCE LEECH	HASTINGS	LANDROVER	SERIES 3	1982
213	ANDY DAVIES	WEST KINGSDOWN	AUSTIN	MINI COOPER S	2003
214	PAUL ADAMS	BEXHILL ON SEA	MG	TF	2002
215	MALCOLM KNIGHT	SISSINGHURST	MG	MGA 1600	1960
216	P SELBY & M PARKES	HOVE	FIAT	500 L	1971
217	ROGER CONDON	WARLINGHAM	FORD	CAPRI	1977
218	JIMMY GRAINGER	WARLINGHAM	FORD	FIESTA	1987
219	GEORGINA MILES	WARLINGHAM	FORD	CAPRI	1980

156	ANDREW TERRY	BATTLE	MG	B ROADSTER	1973
157	JOHN WHEATLEY	ROCHESTER	ROVER	SD1 VANDEN PLAS PRINCESS	1985
158	PHIL INGRAM	BEXHILL ON SEA	ROVER	SD1 VITESSE	1984
159	BARRY LONG	BEXHILL ON SEA	MORRIS	MINI 1275 GT	1972
160	DAVID SOUTHCOTT	ETCHINGHAM	BUICK	SPECIAL	1956
161	JOHN LEMON	BEXHILL ON SEA	LAND ROVER	SERIES IIA	1971
162	JOHN BUSBRIDGE	ST LEONARDS ON SEA	RILEY	NINE MARCH SPECIAL	1933
163	GRAHAME SIMMONS	BEXHILL ON SEA	LEYLAND	MINI	1976
164	ROGER BUTLER	BEXHILL ON SEA	MG	MIDGET	1967
165	PETER CLARKE	HASTINGS	HONDA (USA)	ACCORD COUPE 3.0 V6	1999
166	RICHARD RAWLINGS	BEXHILL ON SEA	TRIUMPH	STAG	1975
167	CLIVE MAYHEAD	BEXHILL ON SEA	PANTHER	KALLISTA	1985
168	DENNIS THOMPSON	ST LEONARDS ON SEA	MG	B ROADSTER	1974
169	PHIL & GAYNOR LEWRY	BEXHILL ON SEA	FORD	SIERRA 4X4	1988
170	MICHAEL & VICKI LEWRY	BEXHILL ON SEA	SUBARU	IMPENZA UK 2000	1997
171	JOHN CHAPLIN	DAGENHAM	FORD	GRANADA	1976
172	JOE WHITE	A21 WHATLINGTON	CHEVROLET	3100	1953
173	PAUL HOLLEBON	BEXHILL ON SEA	HONDA	ACCORD	1995
174	RYAN HOLLEBON	BEXHILL ON SEA	MAZDA	MX5	2005
175	GEMMA HOLLEBON	BEXHILL ON SEA	MITSUBISHI	COLT GLX	1991
176	ROBERT HOLLEBON	ROBERTSBRIDGE	FORD	CONSUL	1962
177	ROBERT HOLLEBON	ROBERTSBRIDGE	FORD	GRANADA	1977
178	DEREK GODDARD	BEXHILL ON SEA	MORRIS	8 SERIES E	1939
179	GRAHAME TOMS	HAILSHAM	FORD	ESCORT	1977
180	GRAHAME TOMS	HAILSHAM	FORD	FIESTA	1997
181	LEON WHITE	ST LEONARDS ON SEA	BMW	Z3	1999
182	MICHAEL SUTTER	THREE OAKS	MERCEDES	A140	1999
183	STEVE FULLER	BEXHILL ON SEA	JENSEN	INTERCEPTOR	1969
184	NICK DOBINSON	BEXHILL ON SEA	JAGUAR	XKR COUPE	2008
185	S MARSHALL & M BRAIN	CROWHURST	MORRIS	MINOR TOURER	1967
186	NIGEL HARRISON	BEXHILL ON SEA	JENSEN	INTERCEPTOR MKIII	1972
187	MICHAEL HENNESSEY	ROBERTSBRIDGE	JAGUAR	MK II	1963
188	SEAN WOODHOUSE	BEXHILL ON SEA	AUDI	100 AVANT CD	1987
189	RICHARD SCOTT	HAILSHAM	FORD	ROADSTER	1934
190	DARREN TAPP	ST LEONARDS ON SEA	MINI	COOPER S	2004
191	DAVID TAPP	ST LEONARDS ON SEA	ROVER	MINI COOPER SPORT	2000
192	GRAHAM BUTLER	LANGNEY	AUSTIN	HEALEY SPRITE	1967
193	RAY SARGENT	BEXHILL ON SEA	LOTUS	ELAN 1600	1970
194	BARRIE LOYNES	ST LEONARDS ON SEA	TRIUMPH	STAG	1976
195	IAN LOYNES	ST LEONARDS ON SEA	MAZDA	MX5	1990
196	PHIL HART	BEXHILL ON SEA	AUSTIN	HEALEY SPRITE	1965
197	MICHAEL BENNETT	BEXHILL ON SEA	LANCIA	FULVIA	1975
198	DAVID TWEEDIE	EASTBOURNE	WOLSELEY	14.56	1938
199	DAVID CHAPPELL	BEXHILL ON SEA	MG	B ROADSTER	1964
200	NORMAN CAMPAIN	BATTLE	MG	TF	2004
201	ROBERT HOLLEBON	BEXHILL ON SEA	FORD	ESCORT	1978
202	ESTYN WILLIAMS	BEXHILL ON SEA	MG	B ROADSTER	1975
203	ANDREW CAREY	BEXHILL ON SEA	MG	MIDGET	1966
204	ANDREW CAREY	BEXHILL ON SEA		MINI	
205	ANDREW CAREY	BEXHILL ON SEA	AUSTIN	1300	
206	TOM DWYER	BEXHILL ON SEA	PLYMOUTH	SATELLITE	1972
207	CHARLIE DWYER	BEXHILL ON SEA	FORD	FIESTA 1.1 GHIA	1985
208	DAVID FARLEY	POLEGATE	ROVER	P6 V8	1972
209	RACHEL CORKE	PEASMARSH	CHEVROLET	CORVETTE CI	1961
210	JOHN UPTON	PEASMARSH	FERRARI	550	1999
211	MICHAEL HOLYOAKE	DALLINGTON	ASTON MARTIN	DB7 VANTAGE	2002
212	KEVIN BARRETT	ASHINGTON	TOYOTA	GT86	2015
213	KEN DINMORE	BURWASH	BMW	840 ci SPORT	1998
214	ALAN MAY	BEXHILL ON SEA	MERCEDES	350 SL	1978
215	ALAN MAY	BEXHILL ON SEA	WOLSELEY	OPEN TOURER	1924

216	MARTIN EAMES	TUNBRIDGE WELLS	MG	TC	1947	110	CHRIS FIGG	LANCING	AUSTIN	METRO VP	1983
217	KEN DOUGHTY	BEXHILL ON SEA	LANCHESTER	LD10	1948	111	ROY CHAMBERS	BEXHILL ON SEA	MORRIS	MINOR	1954
218	COLIN CLAPSHOE	BEXHILL ON SEA	PORSCHE	BOXTER S	2001	112	JOHN RICHARDS	NINFIELD	FORD	CAPRI	1979
219	STEVEN WAKEFORD	EASTBOURNE	PORSCHE	993	1994	113	MALCOLM CALDER	TAMWORTH	BMW	Z4 2.2i	2004
220	ROGER WILKS	BEXHILL ON SEA	VAUXHALL	CRESTA	1960	114	DEREK LAWRENCE	ST LEONARDS	HILLMAN	SUPER MINX	1963
221	KEVIN HUGHES	LANGNEY	FORD	POP	1952	115	JAMES MATHEWS	EASTBOURNE	AUSTIN	A30 VAN	1955
222	ANDREW BERRY	NORTHAM	CHEVROLET	3100	1959	116	ALLAN DOWNEND	RYE	ARMSTRONG	SIDDELEY SAPHIRE 346	1955
223	PHILIP OAKLEY	HASTINGS	ASTON MARTIN	DB2/4 MK1	1954	117	GARY LOVER	CRAWLEY	SUBARU	WRX	2005
224	ERNIE ELDRIDGE	BEXHILL ON SEA	VW	BEETLE	1967	118	LEE WEBBER	BEXHILL ON SEA	SUZUKI	SJ 413	1991
225	ERNIE ELDRIDGE	BEXHILL ON SEA	TRIUMPH	HERALD	1970	119	LEE WEBBER	BEXHILL ON SEA	FORD	ESCORT	1976
226	ERNIE ELDRIDGE	BEXHILL ON SEA	SINGER	GAZELLE CONVERTIBLE	1959	120	GARY KEMP	BEXHILL ON SEA	CITROEN	DS23 ie	1974
227	COLIN EDWARDS	HASTINGS	MG	B ROADSTER	1972	121	BRIGITTE BARBER	PEVENSEY BAY	FORD	CONSUL MK1	1955
228	DAVID LANGFORD	ROBERTSBRIDGE	CITROEN	DS21 SUPER 5	1974	122	COLIN ROBERTSON	CROWBOROUGH	TRIUMPH	135	1973
229	BARBARA BARTON	PEVENSEY BAY	VW	CAMPERVAN	1975	123	STEVE BRADSHAW	GREATSTONE	FORD	CORTINA	1966
230	MICK BARTON	PEVENSEY BAY	MORRIS	MINI PICKUP	1973	124	JUNE VINCENT	SUNBURY	MORRIS	PILGRIM (BULLDOG)	1976
231	JULEY ROSS	BEXHILL ON SEA	AUSTIN	MINI HL	1981	125	ANDREW WALLACE	MARESFIELD	JAGUAR	E-TYPE 2+2	1970
232	NORMAN POOLE	HASTINGS	MG	ZS 180	2005	126	COLIN RAEBURN	BEXHILL ON SEA	BMW	330 CISE AUTO	2000
233	CLIVE HEDDLE	BEXHILL ON SEA	AUSTIN	16/6 OPEN TOP TOURER	1934	127	COLIN RAEBURN	BEXHILL ON SEA	VW	PASSAT PICK UP TRUCK	2000
234	HARRY PAPADOPOULOS	EASTBOURNE	AUSTIN	A40 CONVERTIBLE	1954	128	JAMES CZYRKA	FLIMWELL	TRIUMPH	STAG	1974
235	RAYMOND DUDLEY	BEXHILL ON SEA	ROVER	P3/75	1948	129	RICHARD MANSFIELD	EAST GRINSTEAD	MG	TF 160	2005
236	TONY SKINNER	BEXHILL ON SEA	ASTON MARTIN	V8S	1978	130	S BUCKINGHAM	WADHURST	DELOREAN	DMC 12	1982
237	ALAN MILES	BEXHILL ON SEA	HUMBER	SCEPTRE	1967	131	JAMIE GILHAM	MAIDSTONE	FORD	ESCORT RS TURBO	1990
238	ALAN MILES	BEXHILL ON SEA	FORD	ANGLIA 105E	1963	132	DEBRA DOYLE	ST LEONARDS	ROVER	16 P2	1947
239	TONY MARTIN	BEXHILL ON SEA	NG	TF ROADSTER	1974	133	KEN HONESS	BEXHILL ON SEA	MG	TF	1954
240	MARTIN RHODES	BEXHILL ON SEA	AUSTIN NASH	METROPOLITAN	1956	134	JANE GURL	BEXHILL ON SEA	ROVER	P6B	1972
241	MICHAEL PARR	SEAFORD	JAGUAR	XKR	2000	135	PETER GURL	BEXHILL ON SEA	BENTLEY	TURBO R	1994
242	ADRIAN SCOTT	BEXHILL ON SEA	CITROEN	2CV	1985	136	ANDY BIRCH	PEACEHAVEN	FORD	ORION	1985
243	CHRIS HODGSON	BEXHILL ON SEA	FORD	MUSTANG	2005	137	SOLOMON BOND	CROWBOROUGH	SUUBURU	IMPREZZA SPORT	2001
244	HOWARD THREADGILL	SEVENOAKS	TOYOTA	LANDCRUISER BJ40	1982	138	A NIGHTINGALE	EAST GRINSTEAD	FORD	CONSUL MK1	1955
245	STEVE SIMMONS	EASTBOURNE	RILEY	4/72	1970	139	ROB COLEMAN	ST LEONARDS	LANDROVER	SERIES 2A	1967
246	PETER BROWN	BEXHILL ON SEA	FIAT	124 SPIDER EUROPA	1985	140	ROGER AMOS	BEXHILL ON SEA	ROVER	P5B SALOON	1971
247	GARY SILVERLOCK	BEXHILL ON SEA	VAUXHALL	VIVA	1973	141	ALAN LACEY	ROBERTSBRIDGE	JAGUAR	MKII S TYPE	1966
248	LAURA SHILSTONE	BEXHILL ON SEA	BMW	M4	2016	142	ALFIE WESTLEY	EASTBOURNE	MAZDA	MX5NC1	2006
249	JUSTIN MILLIAM	ST LEONARDS ON SEA	CHEVROLET	CAMARO	1979	143	PETER BOARER	GRAVESEND	ALFA ROMEO	MONTREAL	1971
250	ALAN MCLUCKIE	BEXHILL ON SEA	MERCEDES	SL 320		144	FREDDIE MEDHURST	NEWICK	VW	POLO	1997
251	PETER G STREET	BEXHILL ON SEA	VW	CADDY	1987	145	SIMON BARNARD	EAST GRINSTEAD	SUBARU	IMPREZZA STI	2003
252	MAURICE TAKOOR	BEXHILL ON SEA	FORD	T DOCTORS COUPE	1926	146	MARK LELLIOTT	PEVENSEY	VW	SPLITSREEN CAMPER	1966
253	MIKE ALLEN	ST LEONARDS ON SEA	CHEVROLET	BELAIR	1957	147	LAUREN ELLIS	EASTBOURNE	NISSAN	FIGARO	1991
254	DAVID GODDARD	ST LEONARDS ON SEA	JAGUAR	XJS	1989	148	TONY JOHN IOANNOU	BEXHILL ON SEA	MG	BGT	1978
255	LEWIS GREEN	RYE	MORRIS	MINOR CONVERTIBLE	1969	149	D & L COLLINS	PEACEHAVEN	MORGAN	PLUS 4	1997
256	SUE & BOB COLSON	BROAD OAK	JAGUAR	XKR SUPERCHARGED	2009	150	MICHAEL CLIFT	HAILSHAM	TOYOTA	SUPRA MK4 GZ	1993
257	ALAN PARKES	BEXHILL ON SEA	ROVER	P6 B	1975	151	DARREN THOMAS	ST LEONARDS	AUSTIN	MIN	1970
258	ROBERT ALLEN	MAIDSTONE	PORSCHE	BOXTER	2001	153	COLIN JURY	GUESTLING	MORRIS	TEN 4 SLIDING HEAD	1937
259	PATRICK CROSS	BEXHILL ON SEA	MERCEDES	SL 63 AMG CONVERTIBLE	2016	153	NIGEL HASTINGS	HASTINGS	AUSTIN	MINI 850	1978
260	CHRIS HODGSON	BEXHILL ON SEA	FORD	MUSTANG	1966	154	MARTIN PATTERSON	HORAM	NG	TCV8	1968
261	ALAN HOWES	WINCHELSEA BEACH	MOSS	MALVERN	1973	155	MATTHEW HAINES	TUNBRIDGE WELLS	MG	B ROADSTER	1978
262	TOM MASON	BEXHILL ON SEA	MORRIS	1000 TRAVELLER	1958	156	IAN AGNEW	GOUDHURST	VOLVO	P1800S	1964
263	DAVID DICKENS-SMITH	BEXHILL ON SEA	MORRIS	MINI MINOR	1961	157	WARREN HOLBROOK	BATTLE	PEUGEOT	RCZ	2010
264	DAVID DICKENS-SMITH	BEXHILL ON SEA	AUSTIN	7 MINI	1959	158	M POTTER	BROMLEY	FORD	ZEPHYR	1956
265	IAN COLLIS	ST LEONARDS ON SEA	FORD	FOCUS MK2 RS	2010	159	TIM CARD	HASTINGS	JAGUAR	MK10	1962
266	PETER VACCARI	BEXHILL ON SEA	TVR	CHIMERA 400	1997	160	MARIA WENT	HASTINGS	MAZDA	MX5 MK1	1998
267	JOHN MOORE	ST LEONARDS ON SEA	TVR	CHIMERA V8	1998	161	DEAN DAY	EASTBOURNE	VW	TRANSPORTER CAMPER	2018
268	PAT BEDFORD	EASTBOURNE	ROLLS ROYCE	SPIRIT	1981	162	SHANE HUMPHRIES	BEXHILL ON SEA	VAUXHALL	VECTRA	2000
269	PAT BEDFORD	EASTBOURNE	BENTLEY	BROOKLANDS R TURBO	1997	163	MARK STINSON	BRIGHTON	DAIMLER	MAJESTIC MAJOR	1961
270	CHRISTOPHER WHITE	ST LEONARDS ON SEA	BUGATTI	T35 REPLICA	1969	164	MATT TAYLOR	DORKING	SUBARU	LEGACY GTB WR LTD	2004
271	KEVIN WORSSELL	SOUTHBOROUGH	JAGUAR	E-TYPE	1973	165	MARK FAIRMAN	MAIDSTONE	MORRIS	MINOR	1968
272	JIM PLAYFORD	PEASMARSH	MORRIS	MINI-MINOR	1960						
273	MIKE ROSNER	BEXHILL ON SEA	AUSTIN	HEALEY MK1 SPRITE	1959						
274	TERRY & JOAN FINAN	CROWHURST	BMW	325	1985						

53	JOHN A CROWSON	HORAM	MARCOS	1800 COUPE	1966
54	JOSEPH HARRISON	BALCOMBE	RONART	W152 MARK 2	2004
55	KEVIN PHAROAH	TUNBRIDGE WELLS	JAGUAR	XJ 40	1989
56	TONY MCALPINE	SUTTON VALANCE	TRIUMPH	VITESSE	1969
57	COLIN MITCHELL	HAILSHAM	EUNOS	ROADSTER	1990
58	KEITH RUDRUM	EASTBOURNE	TOYOTA	GT86	2013
59	JASON BROWN	HAYWARDS HEATH	PORSCHE	944	1989
60	JOHN PARKS	HASSOCKS	MG	BGT	1971
61	ERIC GODFREY	EASTBOURNE	BENTLEY	DERBY	1935
62	KATHERINE KENWARD	FARNHAM	TOYOTA	GT86	2013
63	LEE KEMPTON	SITTINGBOURNE	JAGUAR	X350	2004
64	DIANE DERRICK	WATERLOOVILLE	TOYOTA	GT86	2012
65	BARRIE WELLER	RINGMER	MG	BGT V8	1973
66	KATIE WARE	BEXHILL ON SEA	AUDI	A1	2013
67	RAY HILL	SOUTH CHAILEY	VAUXHALL	WYVERN E	1957
68	ANDY CRIPPS	MAIDSTONE	FORD	ANGLIA	1950
69	BERNARD CURLEY	HAILSHAM	MG	BGT	1974
70	KEVIN KNOWLES	ORPINGTON	VOLVO	P1800	1962
71	KEN GOLDSMITH	WATFORD	RILEY	ONE POINT FIVE	1964
72	B LIEN-LAMBERT	EASTBOURNE	ALFA ROMEO	GIULIETTA SPIDER VELOCE	1960
73	NICK WILLIAMS	ASHTREAD	HEALEY	FROGEYE SPRITE	1959
74	ANNE & MARY BRYANT	ST LEONARDS	ROVER	.9/20	1926
75	ALF CRAKER	DEAL	MORRIS	1800 MK II LAND CRAB	1971
76	DANIEL BROOKBANK	PEVENSEY BAY	VW GOLF	GTI CONVERTIBLE MK1	1986
77	DANIEL WRIGHT	UCKFIELD	FORD	ESCORT	1989
78	DANIEL WRIGHT	UCKFIELD	FORD	ESCORT	1985
79	DANIEL WRIGHT	UCKFIELD	FORN	CORTINA	1973
80	N BONNER-WILLIAMS	HAWKHURST	TRIUMPH	TR6	1974
81	MICHAEL CRAKER	MAIDSTONE	TRIUMPH	DOLOMITE	1977
82	KEVIN COWDRY	CRAYFORD	TRIUMPH	VITESSE	1970
83	TONY SHELDON	LENHAM	JAGUAR	D TYPE	1984
84	PAUL STANLEY	BATTERSEA	ROVER	SD1 SL2600	1978
85	ANNE BUSH	EASTBOURNE	MG	BGT	1974
86	PETER CRAKER	DEAL	JAGUAR	3.4 MK1	1957
87	MALCOLM CROUCH	CROWBOROUGH	FORD	GRANADA	1976
88	DAVE CROUCH	CROWBOROUGH	FORD	GRANADA	1983
89	KIERAN BOWLES	ST LEONARDS	AUSTIN/MORRIS	MINI PICK-UP	1979
90	PETER GILBY	LINGFIELD	MG	MAESTRO 2.0L EFI	1986
91	DAVID SECORD	ST LEONARDS	JAGUAR	XK8	1999
92	STEPHEN WHITE	EAST DEAN	JAGUAR	E-TYPE 2+2	1966
93	JUNE GROVE	CRAWLEY	TRIUMPH	STAG	1974
94	NEIL JESSOP		FORD	MODIFIED	
95	MARK WATSON		FORD	FOCUS	
96	SCOTT REED		FORD	ESCORT	
97	CHARLIE FRENCH		FORD	ESCORT	
98	ROY CHAMBERS		MORRIS	MINOR	
99	JOHN WOOD		FORD	CAPRI	
100	GLENN BUTLER	LEWES	FORD	CAPRI	1987
101	DANIEL HARLOW	PEVENSEY BAY	WOLSELEY	1500	1962
102	DAVE FUNNELL	PEACEHAVEN	TVR	TUSCAN MK1	2002
103	LES&MAGGIE CORNISH	BEXHILL ON SEA	MORGAN	ROADSTER	2016
104	DAVID FAIRCLOUGH	ST LEONARDS	FIAT	500L	1972
105	MICHAEL ORI	SEAFORD	FERARRI	360 SPIDER	2001
106	JON COOPER	HAILSHAM	TRIUMPH	SPITFIRE 1500	1977
107	OLIVER COOPER	HAILSHAM	WESTFIELD	SEIW	1995
108	DAVID J ELLIOTT	BEXHILL ON SEA	MG	MIDGET	1974
109	DAVID J ELLIOTT	BEXHILL ON SEA	MG	TC	1948

275	JAMES FRY	BEXHILL ON SEA	PEUGEOT	J9 VAN	1984
276	KEN MONK	BEXHILL ON SEA	AUSTIN	16	1947

CLASSIC CARS

1	LEN NUTBEAM	EASTBOURNE	MG	BGT	1971
2	JUSTIN HILDRETH	POLEGATE	LANCIA	FULVIA	1967
3	GOFF RADCLIFFE	RUSHLAKE GREEN	BEDFORD	J TYPE	1960
4	PHILLIPE SHAW	HASTINGS	VW	BEETLE	1974
5	ANDREW ARMITT	LANCING	HUMBER	SCEPTRE	1964
6	SIMON MILLER	MAYFIELD	RENAULT	9	1987
7	F YOUNG	WIVELSFIELD GREEN	TRIUMPH	STAG	1977
8	JOHN WOOD	SEAFORD	ASTON MARTIN	MK 2 SPORTS SALOON	1934
9	GUY HETHERINGTON	BRIGHTON	ROVER	P3 75 SIX LIGHT	1949
10	MIKE DOUGLAS	BEXHILL ON SEA	TRIUMPH	TR6 TROPHY	1958
11	BILL READ	FAIRLIGHT	MG	TD	1952
12	KEITH BAKER	ST LEONARDS	TOYOTA	PASEO	1996
13	JOHN COLYER	MAIDSTONE	FORD	ANGLIA	1963
14	HANS ZINKE	EDENBRIDGE	MERCEDES	W 114	1971
15	GRAHAM BAKER	AYLESFORD	CATERHAM	SEVEN SUPERSPORT	1994
16	JEAN HATTON	EASTBOURNE	VW	T2 CAMPER	1974
17	JOHN CLARKE	POLEGATE	TRIUMPH	DOLOMITE	1977
18	TIM SMITH	REIGATE	FORD	ESCORT GHIA	1980
19	MICHAEL NEWSON	COWFOLD	ASTON MARTIN	VIRAGE VOLANTE	1994
20	NIGEL HILLIARD	CROWBOROUGH	AUSTIN	HEALEY SPRITE MK1	1959
21	TOMMY GIBBONS	HAYWARDS HEATH	AUDI	A5 S LINE SPORTSBACK	2012
22	TONY JENNINGS	TUNBRIDGE WELLS	JAGUAR	XJS CELEBRATION	1996
23	PATRICIA WHEELER	PURBROOK	MG	TF 80TH ANNIVERSARY	2004
24	MARTIN HOAD	SHOREHAM BY SEA	TRIUMPH	STAG	1975
25	COLIN LAKE	HASTINGS	FIAT	600D	1966
26	JAMES WILSON	BEXHILL ON SEA	TOYOTA	GT86	2012
27	CHRIS MILES	EASTBOURNE	AUDI	S6 V55	2004
28	LAURIE CRISFORD	HASTINGS	AUSTIN	A60 CAMBRIDGE	1966
29	JOHN NEWLAN	SOUTH CROYDON	FORD	ORION	1993
30	CHRIS STONE	HASTINGS	FORD	CAPRI	1983
31	VALERIE BRADSHAW	PEVENSEY	VW	CAMPER	1972
32	IAN GORDON	NR LEWES	TRIUMPH	GT6 MK3	1972
33	JIM DAVIES	TONBRIDGE	MG	BGT	1978
34	DAVID BAUGHN	TUNBRIDGE WELLS	SAAB	900 TURBO	1988
35	DAVID BAUGHN	TUNBRIDGE WELLS	MAZDA	MX5 AUTO	2002
36	VIC RICHARDSON	HAILSHAM	TRIUMPH	SPITFIRE	1980
37	MELVYN EYLES	HAWKHURST	VAUXHALL	PA CRESTA	1961
38	TREVOR LUCAS	TONBRIDGE	HILLMAN	SUPER MINX	1966
39	ROBERT PARKER	GRAVESEND	JAGUAR	XJ12	1995
40	MISS ISABEL PEARCE	SEVENOAKS	AUSTIN	A55 CAMBRIDGE	1958
41	RICHARD MURRELL	EASTBOURNE	LANDROVER	88" SAFARI	1976
42	ROBERT PERCH	MAIDSTONE	JAGUAR	XK8	2003
43	LEO HETHERINGTON	PEACEHAVEN	MG	A	1957
44	ELLICE HETHERINGTON	PEACEHAVEN	NISSAN	FIGARO	1991
45	STEVE BRONOCK	BATTLE	MORGAN	PLUS 4	1996
46	ROGER TURLEY	FLIMWELL	FORD	ZODIAC MK II	1960
47	ANDREW MOORE	SHOREHAM BY SEA	TRIUMPH	SPITFIRE MK3	1968
48	CHRIS FERRIS	EASTBOURNE	FORD	TUDOR SLANTBACK	1937
49	THOMAS REAH	TONBRIDGE	FACEL	VEGA	1961
50	DAVID COOPER	MIDHURST	DAVRIAN	MK 6A	1973
51	ROY SWALLOW	BEXHILL ON SEA	ASTON MARTIN	DB9 GT VOLANTE	2017
52	PAUL COLLARD	HAILSHAM	TRIUMPH	RENOWN	1951

